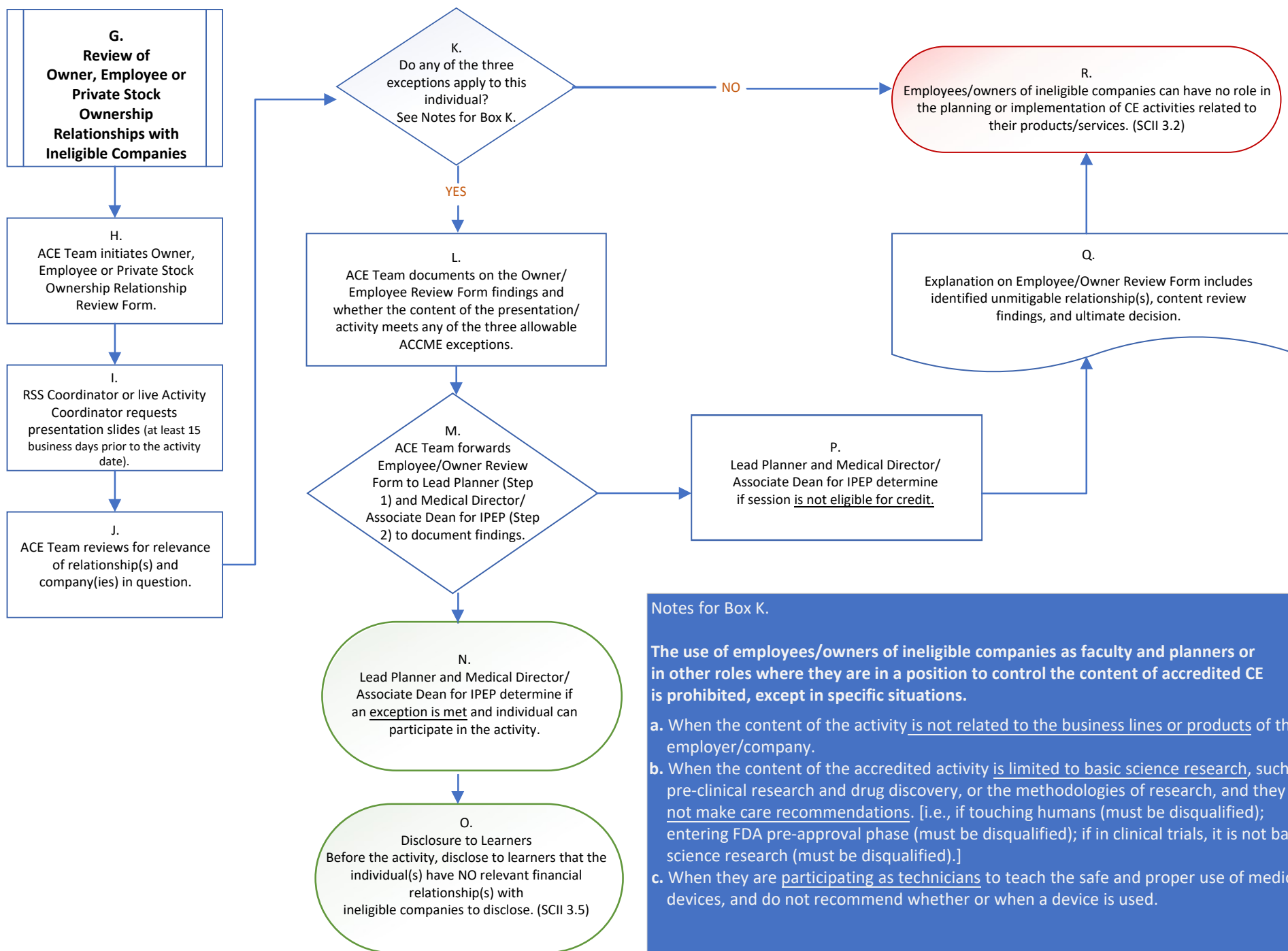


***Ineligible Company** those whose primary business is producing, marketing, selling, re-selling, or distributing healthcare products used by or on patients.

- Advertising, marketing, or communication firms whose clients are ineligible companies
- Bio-medical startups that have begun a governmental regulatory approval process
- Compounding pharmacies that manufacture proprietary compounds
- Device manufacturers or distributors
- Diagnostic labs that sell proprietary products
- Growers, distributors, manufacturers or sellers of medical foods and dietary supplements
- Manufacturers of health-related wearable products
- Pharmaceutical companies or distributors
- Pharmacy benefit managers
- Reagent manufacturers or sellers

****Individuals who own stock in private ineligible companies are considered owners by the accrediting body.**



Notes for Box K.

The use of employees/owners of ineligible companies as faculty and planners or in other roles where they are in a position to control the content of accredited CE is prohibited, except in specific situations.

- When the content of the activity is not related to the business lines or products of their employer/company.
- When the content of the accredited activity is limited to basic science research, such as pre-clinical research and drug discovery, or the methodologies of research, and they do not make care recommendations. [i.e., if touching humans (must be disqualified); entering FDA pre-approval phase (must be disqualified); if in clinical trials, it is not basic science research (must be disqualified).]
- When they are participating as technicians to teach the safe and proper use of medical devices, and do not recommend whether or when a device is used.

